

3M™ 9422+, P2 Particulate Respirator

Technical Data Sheet



Description

The 3M™ Aura™ 9422+ Particulate Respirator with P2 rated filtration provides effective respiratory protection for use in environments where workers will be exposed to airborne dust particles and non-volatile liquid particles. This respirator is designed specifically for the food manufacturing industry. It can also be used in industries that require staple free and/or visually detectable respirators, like the pharmaceutical industry.

- Provides protection against mechanically and thermally generated particulates
- Distinguishable non-food colour (bright blue) to ensure quick search recognition
- Made without staples or small detachable parts
- Embedded nose clip is concealed and is metal detectable
- Nose clip is kept securely in place within the layers of the respirator
- Hygienic individual packaging helps protect the respirator from contamination before use
- Foldable, easy to store, proprietary 3-panel design accommodates facial movement for wearer comfort
- 3M low breathing resistance filter technology gives effective filtration for consistent high quality performance
- Sculpted nose panel helps conform to the wearer's nose and contours of the face and helps to improve compatibility with 3M eyewear and ear-muffs
- New embossed top panel of the respirator helps to reduce fogging of eyewear
- Innovative chin tab designed for ease of donning and adjustment to help achieve a more comfortable fit
- 3M™ Cool Flow™ exhalation valve offers improved comfort in hot humid environments and/or where work is hard and physical
- Large, soft nose-foam comfortable on the skin
- Even strap pressure improves comfort on the neck, face and head with a secure feel

Materials

The following materials are used in the production of the 3M™ Aura™ 9422+ respirator:



Straps	Thermoplastic Elastomer
Nose Foam	Polyurethane
Nose Clip	Aluminium
Filter	Polypropylene
Valve	Polypropylene
Valve Diaphragm	Polyisoprene

This respirator does not contain components made from natural rubber latex.

Maximum mass of respirator = 18g

Standards

The 3M™ 9422+ respirator meets the Class P2 performance requirements of AS/NZS 1716:2012 for filtering mechanically and thermally generated particles, e.g. those from welding fumes. Class P2 respirators are also recommended for use in certain applications against some pathogenic biological airborne particulates such as Influenza virus. A copy of AS/NZS 1716:2012 can be purchased from SAI Global.

Applications

This respirator is suitable for use in concentrations of solid and non-volatile liquid particles up to 10 times the relevant Exposure Standard.

The 9422+ respirator is suitable for the following applications (but is not limited to):

Food manufacturing:

- Flour dust
- Enzyme additives
- Cereal and non-cereal flours
- Egg and fish protein
- Spices and condiments
- Coffee powder
- Sugar and confectionery products
- Animal and bird feed
- Alcoholic and soft drink beverage
- Fruit and vegetable processing
- Cleaning and maintenance

Pharmaceutical:

- Shaping / tablet formation
- Medicinal and pharmaceutical product manufacturing
- Cleaning and maintenance

Certification

The 3M™ 9422+ respirator has been produced to comply with the requirements of Australia/New Zealand Standard AS/NZS 1716:2012 under an agreed production certification scheme operated during manufacture in accordance with the SAI Global StandardsMark™ program.

Respiratory protection is only effective if it is correctly selected, fitted and worn throughout the time when the wearer is exposed to hazards.

Important

- Before use, the wearer must be trained in use of the complete product in accordance with AS/NZS 1715:2009 and other applicable Health and Safety standards/guidance.
- Proper selection, training, use and appropriate maintenance are essential in order for the product to help protect the wearer from certain airborne contaminants.
- Failure to follow all instructions and limitations on the use of the respirator and/or failure to wear the respirator during all times of exposure can reduce respirator effectiveness and may result in sickness or death.
- For suitability and proper use follow local regulations and refer to all information supplied. For additional assistance, contact an Occupational Hygienist, Safety professional or 3M TechAssist Helpline.
- Do not use in atmospheres containing less than 19.5% oxygen, as the respirator does not supply oxygen. (3M definition – individual countries may apply their own limits on oxygen deficiency. Seek advice if in doubt.) Do not use for respirator protection against atmospheric contaminants/concentrations which are unknown or immediately dangerous to life and health (IDLH).



Warnings and Use Limitations

Always be sure that the complete product is:

- Suitable for the application;
 - Fitted correctly;
 - Worn during all periods of exposure;
 - Replaced when necessary.
- It is recommended that fit testing be conducted before assigning a respirator to an individual. If you cannot achieve a proper fit then do not enter contaminated area. See your supervisor.
 - Inspect respirator before each use to ensure it is in good working condition. Examine all the res-pirator parts for signs of damage including the two straps, noseclip, nose foam and staples. The respirator should be disposed of immediately upon observation of damaged or missing parts.
 - Leave the contaminated area immediately and contact supervisor if dizziness, irritation or other distress occurs.
 - Do not alter, repair, wash, abuse or misuse the respirator.
 - Do not use with beards or other facial hair or other conditions that prevent a good seal between the face and the sealing edge of the respirator.
 - The respirator can help protect the wearer's lungs against certain airborne contaminants; however, it will not prevent entry through other routes such as the skin or eyes, which would require additional personal protective equipment (PPE).
 - The respirator is designed for occupational/professional use by adults who are properly trained in their use and limitations. The respirator is not designed to be used by children.
 - Individuals with a compromised respiratory system, such as asthma or emphysema, should consult a physician and complete a medical evaluation prior to use.
 - Operating Temperature Range: -20 to +50 degrees Celsius. CAUTION: Care should be taken when using the respirator at low temperature as excessive moisture may cause the valve to freeze.
 - The filtration efficiency of the respirator may decrease in the presence of oily mists.

It is recommended that wearers be fit tested in accordance with AS/NZS 1715:2009 Standard. For information regarding fit testing procedures, please contact 3M.

Fitting Instructions

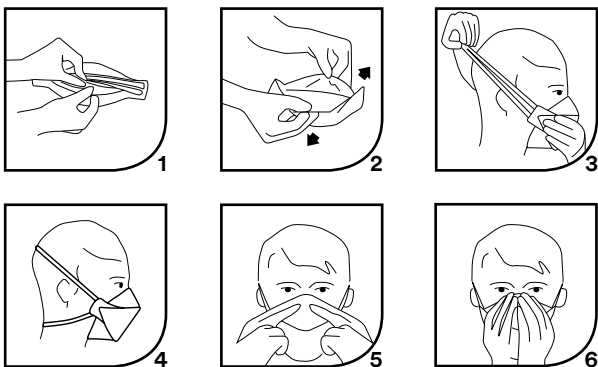
Must be followed each time the respirator is worn. Before fitting device, ensure hands are clean.

See Figure 1 below.

All respirator components should be inspected for damage prior to each use.

1. With reverse side up and using the tab, separate top and bottom panels to form a cup shape. Bend slightly at centre of the nose clip.
2. Ensure both panels are fully unfolded.
3. Cup respirator in one hand with open side towards face. Take both straps in other hand. Hold respirator under chin, with nose piece up, and pull straps over head.
4. Locate the upper strap across the crown of the head and the lower strap below the ears. Straps must not be twisted. Adjust top and bottom panels for comfortable fit, ensuring panels and chin tab are not folded in.
5. Using both hands, mould nose clip to the shape of the lower part of the nose to ensure a close fit and good seal. Pinching the nose clip using only one hand may result in less effective respirator performance - use two hands.
6. The seal of the respirator on the face should be fit checked before entering the workplace

Figure 1



Warning: Selection of the most appropriate respiratory protective equipment (RPE) will depend on the particular situation and should be made only by a competent person knowledgeable of the actual working conditions and the limitations of RPE. Details regarding performance and limitations are set out in this technical bulletin as well as on the respirator packaging and user instructions. Before using any respirator, the wearer must read and understand the user instructions for the product. Specific legislation must be observed. If in doubt, contact a safety professional or 3M.

Important Notice: To the extent permitted by law, 3M shall not be liable for any loss or damage including any loss of business, loss of profits, or for any indirect, special, incidental or consequential loss or damage arising from reliance upon any information herein provided by 3M. Nothing in this statement will be deemed to exclude or restrict 3M's liability for death or personal injury arising from its negligence.



3M Australia Pty Ltd
Personal Safety Division
Bldg A, 1 Rivett Road
North Ryde NSW 2113

TechAssist Helpline 1800 024 464
Customer Service 1300 363 565
Email techassist@mmm.com
Web www.3M.com.au/ppesafety

3M New Zealand Ltd
Personal Safety Division
94 Apollo Drive, Rosedale
Auckland 0632

TechAssist Helpline 0800 364 357
Customer Service 0800 252 627
Email 3mnzitm@mmm.com
Web www.3m.com.nz/ppesafety

3M and Aura are trademarks of 3M.
© 3M 2018. All rights reserved.
AV011465877

Fit Check

1. Cover the front of the respirator with both hands being careful not to disturb the fit of the respirator.
2. (a) UNVALVED respirator - EXHALE sharply;
(b) VALVED respirator - INHALE sharply.
3. If air leaks around the nose, re-adjust the nose clip to eliminate leakage. Repeat the above fit check.
4. If air leaks at the respirator edges, work the straps back along the sides of the head to eliminate leakage. Repeat the above fit check.

If you CANNOT achieve a proper fit DO NOT enter the hazardous area. See your supervisor.

It is recommended that wearers be fit tested in accordance with AS/NZS 1715 Standard. For information regarding fit testing procedures, please contact 3M.

Storage and Transportation

The 3M™ Aura™ Particulate Respirator 9422+ has a shelf life of 5 years. End of shelf life is marked on the product packaging. Before initial use, always check that the product is within the stated shelf life (use by date). Product should be stored in clean, dry conditions within the temperature range: -20°C to +25°C with a maximum relative humidity of <80%. When storing or transporting this product use original packaging provided.

Removal Instructions

See Step 5 of Fitting Instructions and place hand over the respirator to maintain position on the face. Pull the bottom strap over your head. Still holding respirator in position, pull the top strap over your head and remove the respirator.

Disposal

Used respirators should be disposed of in accordance with national regulations.